

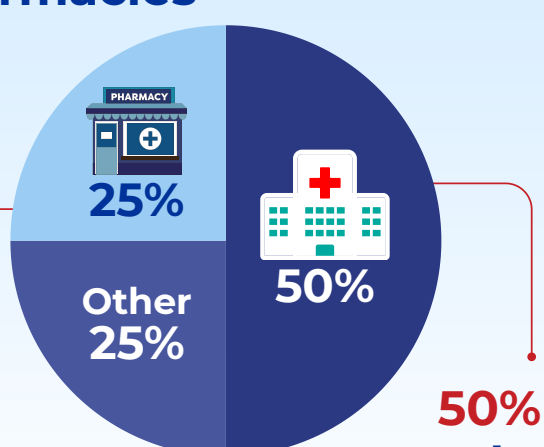
The true cost of hospital inefficiency

Where are Romanian hospitals losing the most money?



Health expenditure & underfunding

25% goes to pharmacies



50% goes to hospitals



€1,663

Romania's per capita health spending



€4,030

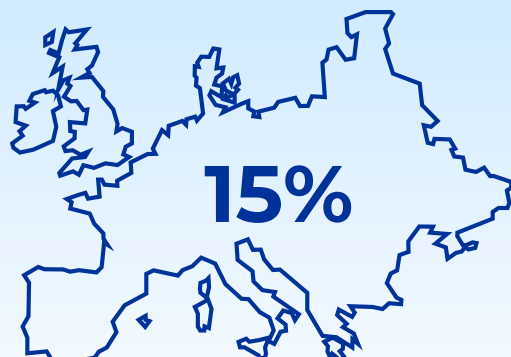
EU average per capita health spending



Inefficiencies in public healthcare funding

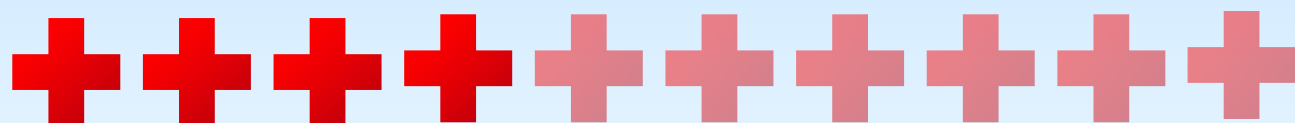


Out-of-pocket health costs



Out-of-pocket health costs

Structural inefficiencies



39% of Romanian hospitals

operate at **suboptimal** sizes, contributing to inefficiencies



89% of public hospitals are inefficient



169.6

avoidable diabetes hospitalizations

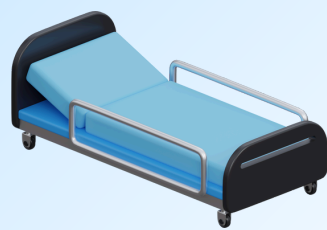


106.6

avoidable diabetes hospitalizations



Resource underutilization & costs



46%

projected bed occupancy rate by 2025

5

days

average hospital stay in Romania



3000 RON

Average cost per spitalization in 2025

Impact on patient outcomes

440

preventable mortality per 100,000 inhabitants in Romania

294

preventable mortality per 100,000 inhabitants in Europe